



MUNICIPAL  
MUSEUM  
IN ŻORY

# TO BE LIKE MUZEON

A BRIEF HISTORY  
OF THE MUNICIPAL  
MUSEUM IN ŻORY



---

# MISSION

---

The cognition of the world begins at a museum...

A museum is a place, where the past meets the future. This encounter takes place in a distinctive atmosphere. It is made by the scientific dimension of cognition, which allows for deeper reflection and balanced opinions. It is where we get to know the history and tradition of the place where we live. It is where we begin our journey to the faraway world in order to “touch” it and to better understand it.

---

## MUSEUM - WHO IT IS FOR

---

A museum is a place where a real-life object acquires a scientific level of perception.

Museum is a place where a child gets to know the distant world of the past in order to learn how to live in the surrounding world.

A museum is a place where you listen to the voices of older generations in order to live better and smarter.

---

## HOW WE OPERATE

---

The offer of the Municipal Museum in Żory is constructed with care as a response to the needs of a large group of viewers, regardless of their age, opinions and the culture in which they grew up, and it is supported by a reliable scientific background.

The pursued ideas touch on the closest topics such as the history and culture of the city and the region, as well as the topics that seem rather distant, that is non-European, but also very significant in the light of the dynamically developing and migrating world.

We operate successfully and we achieve the acknowledged standards, as evidenced by the awards we have received:

- in 2007 we were pronounced the Autonomous Leader of Management in the field of social services for: “Integrated development plan - educational and cultural study project - a modern form of museum activity”,
- in 2009 – a Special Award in a competition called “Good PPP practice” for the concept of “Yatenga Museum - meeting of world’s cultures. Construction of an innovative museum complex in Żory” project.

# HEADQUARTERS

**Then:**



The Municipal Museum in Żory was founded in 2000 as an initiative of Żory authorities, people working with the Association of Żory Enthusiasts and the director of the Municipal Culture Center at that time, Lucjan Buchalik, PhD. Until 2013, the Museum was located in the rented rooms of the Municipal Culture Center.

Total surface of the museum equaled 476 m<sup>2</sup>, which included the exhibition surface of approximately 250 m<sup>2</sup>. The institution had eight employees.

During the first year of activity, 4678 people visited the museum.

**Now:**



In 2014, the museum was relocated to the new headquarters on Muzealna 1/2 street in Żory. Rooms in the newly renovated Haering villa and in the newly constructed exhibition and storage extension of the building were put at the museum's disposal.

The museum on Muzealna street has a total surface area of 1100 m<sup>2</sup>, including 497 m<sup>2</sup> of the exhibition surface. A new conference room seating 80 people was also put at the museum's disposal. What is more, the museum also has 400 m<sup>2</sup> of storage located in a building on Zjednoczonej Europy Avenue, which is intended to serve as a safe place for its dynamically developing collections. The museum has 21 employees. During the first year of activity in the new headquarters, over 25 thousand people visited the institution.

The museum was rewarded in a competition for the most important museum event of the year called "SYBILLA 2014" for its project "Investment of a common public-private interest – the Municipal Museum in Żory".

The competition jury appreciated the investment's innovative solution, which combined the business sphere with the public sphere in order to achieve mutual benefit during the realization of the policy of the Business Partnership Program for the needs of the local community.

# COLLECTIONS

The museum gathers items connected with the history of Žory, the history and culture of the region as well as non-European cultures (especially African) in a very considered way in order to build representative collections which highlight the museum's character and distinguish it from other museum institutions in the country.

## Then:

During the first year of activity, the museum had 616 collectibles, including 442 items in the inventory of the Regional History and Culture Department and 174 items in the inventory of the Non-European Cultures Department. The collections were stored in rented rooms which did not comply with maintenance requirements.



## Now:

The museum has over 5500 collectibles which create the collections in the Regional History and Culture Department and Non-European Cultures Department. The collections are growing dynamically and on average, over one year, there are around 300 items added to the inventory. The collections are stored in the modern storage areas which are adjusted to the requirements and character of the exhibits, providing a safe environment.



# SCIENTIFIC AND EXHIBITION PROGRAMS

## OUR IDENTITY

The “Our Identity” exhibition is an attempt to make a step towards this research. It talks about the identity of people and place. It is a walk through the everyday life ups and downs of past generations. The narrative of this journey in time is conducted from a modern day perspective – the starting point for reflection is here and now. The program includes a wide range of promotional, scientific and educational activities.



## POLSKIE POZNAWANIE ŚWIATA

The exhibition and scientific program “The Polish way of learning the world” concerns Polish non-European studies and the role of Poles in the development of science, culture and art in the world. The program is of a scientific research nature. It presents both an historical view of the subject and the status of modern research. It is a good example of how one can combine a material object with a cultural and historical background. This combination is accompanied by an extensive comment in the virtual space.

The program was awarded in a competition for the most important museum event of the year called “SYBILLA 2017” in the ethnographic exhibitions category.



---

# EXHIBITIONS

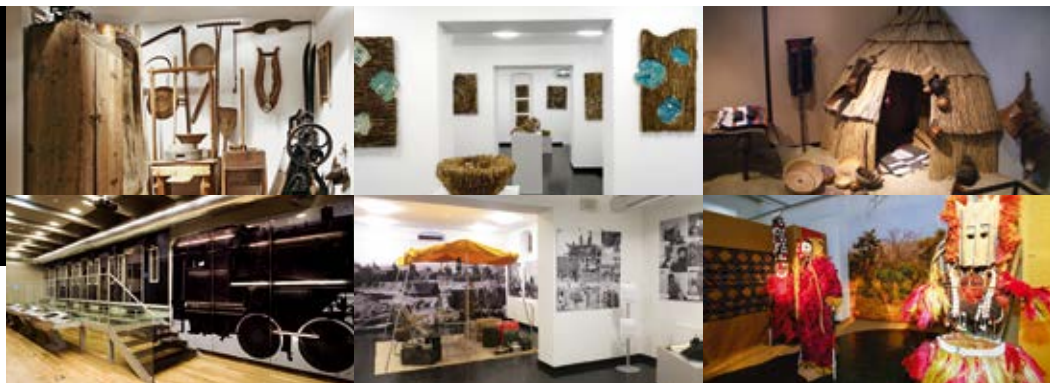
---

The museum conducts exhibition activities based on its own collections and exhibits rented from other museums. Exhibitions are connected with ongoing educational and cultural studies programs. The collections are presented as permanent and temporary exhibitions as well as travelling exhibitions displayed in other museums in the country.

---

## TEMPORARY/TRAVELING EXHIBITIONS

---



---

## CYCLICAL PROJECTS

---

### THURSDAY MEET-UP WITH SCIENCE

Meet-ups are a good opportunity to confront current scientific challenges or to present the status of the latest research in humanities and the newest publications. Exceptional and interesting people as well as authorities in the sphere in question are asked to join the event.

### PROVINCIAL GARDEN OF ARTS

Meet-ups are a pretext to talk about art (and not only art) and issues connected with its interpretation, analysis and understanding. The dialog is treated with an impressionism momentum which allows for reflection and for everyone to make their point, according to the rule "everyone can do anything at the museum".

### ŻORY MEMORIES

A meet-up cycle inspired by a widely discussed publication by prof. Kazimierz Miroszewski called "Żory 1945-1989. A historical monography". The inhabitants of Żory are invited to take part in the discussion. Their knowledge usually exceeds the books and presents a new look at historical events.

### FOLLOWING THE MONUMENTS OF ŻORY

Meet-ups from the series dedicated to the monuments of Żory. Exceptional, mysterious and ravishing items are pulled from the dark and presented in the daylight.

### NIRvana – SCIENTIFIC INSPIRATIONS FOR FAMILIES

A museum family game based on knowledge, cleverness and skills. A good dose of science and practical knowledge offered in a funny and unusual way. Meet-ups are dedicated to families, children, grandparents and all people willing to participate.

---

# EDUCATION

---

---

## DEVELOPMENTAL EDUCATION

---

From the beginning of its activity, the museum has been realizing projects in the developmental education sphere. Educational activities are conducted based on the “One Project Theory” which assumes:

- the educational and cultural study character of ongoing projects,
- presentation of cultural differences in the widest perspective possible,
- interdisciplinarity,
- involvement in a cultural dialogue,
- multi-step character and long realization time of the projects,
- openness of the offer which is diversified when it comes to the substantive content and adjustment to the age of the recipient,
- pressure on the educational work which constitutes a fundamental element of the project.

The innovative character of the projects has been awarded many times. Among the awards one can mention an award and an honorable mention in a competition for the most important museum event of the year called “Sybilla” (2003, 2016), awards and honorable mentions of the Marshal of the Silesian Voivodeship (2008, 2009, 2010, 2016) and European Language Label awards (2003, 2007).



---

## KNOWLEDGE ABOUT THE CITY AND REGION

---

The museum takes care of keeping a balance between projects dedicated to the history and culture of the region and projects connected with non-European cultures. The assumption is that a well shaped and strongly rooted sense of identity is a base for discovering the world.

The educational offer includes the proposition of lessons conducted around the space of permanent exhibitions, with a scientific context presented in simple and often humorous language. A lesson at the museum is a pretext for a discussion and dialogue. The main goal of such classes is to prepare children and teenagers for active engagement in the local community with an awareness of their own identity and involvement in the city and affairs of the region.

---

# SCIENTIFIC AND RESEARCH FIELD TRIPS

---

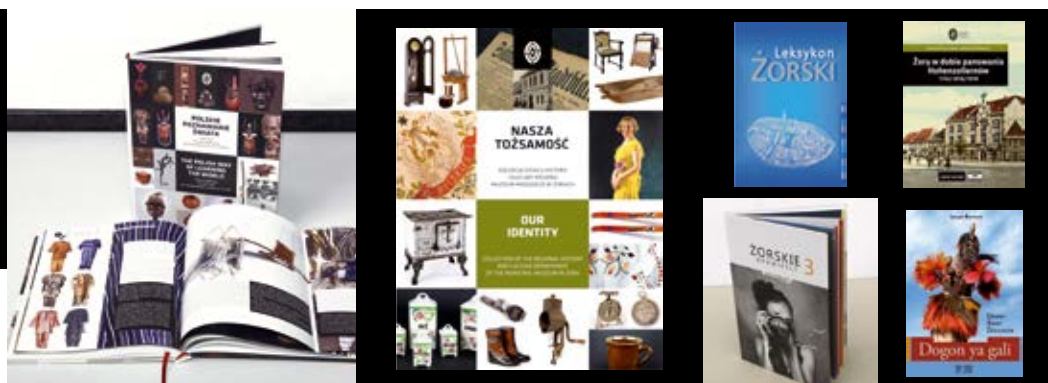
The Municipal Museum in Żory registers and describes the history of the city and region through realized research projects. One effect of this is the constantly growing source stock – documentary and iconographic. It also conducts systematic scientific and research work based on field research conducted by its employees, mostly in West Africa. The effects of this are new exhibits, constantly developing scientific information for the museum, scientific articles and publications by the employees.

---

# PUBLICATIONS

---

The Municipal Museum in Żory conducts a consequent publishing policy which assumes a balance between scientific, popular scientific and educational publications. All publications are prepared with attention to the scientific and editorial standard. Some of them („Leksykon żorski”, 2011; „Dogon ya gali. Dawny świat Dogonów”, 2012, „Ex Africa semper aliquid novi”, 2015, „Polskie poznawanie świata. Kolekcja pozaeuropejska Muzeum Miejskiego w Żorach”, 2016) have been awarded by the Marshal of the Silesian Voivodeship.



---

## PRACTICAL INFORMATION ABOUT THE MUSEUM

---

Muzeum Miejskie w Żorach  
adres: ul. Muzealna 1/2, 44-240 Żory  
tel: 32 47 57 480, tel: 32 43 43 714  
e-mail: [muzeum@muzeum.zory.pl](mailto:muzeum@muzeum.zory.pl)  
[www.muzeum.zory.pl](http://www.muzeum.zory.pl), [www.naszatozsamosc.pl](http://www.naszatozsamosc.pl)

Żorskie Centrum Regionalne  
adres: ul. Szkolna 57, 44-240 Żory-Osiny  
tel: 32 43 41 193  
email: [jadwigatabor@muzeum.zory.pl](mailto:jadwigatabor@muzeum.zory.pl)  
[www.zcr.zory.pl](http://www.zcr.zory.pl)